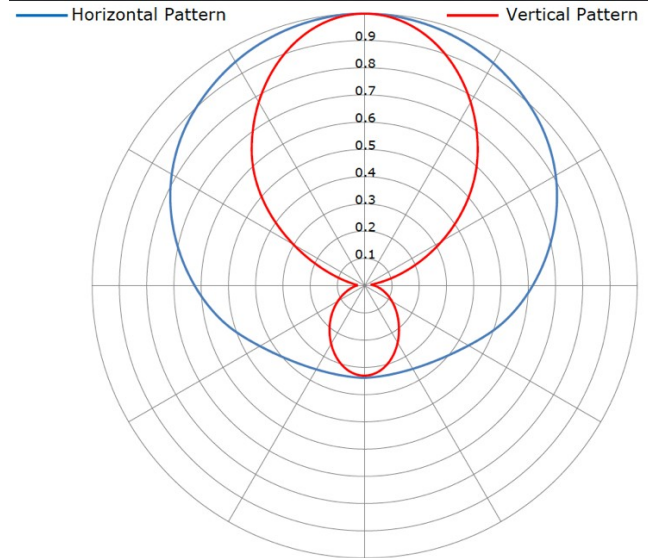


E/EM Radiation Patterns (Vertical Polarization)



Electrical Specifications

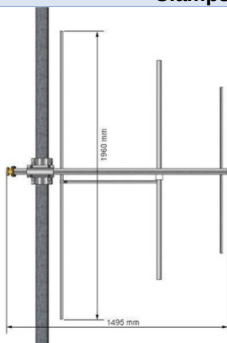
Frequency Range	87.5 -108 MHz
Input Impedance	50 Ohm
Polarization	Vertical/Horizontal
Gain	4.5 dBd
VSWR	≤ 1.25
Max Input Power	3 KW or 5 KW

Mechanical & Environmental Specifications

Input Connector	DIN 7/16 or EIA 7/8
Operating Temperature	-50°C / +80°C
Wind load	165 N (@ 160 km/h)
Weight	12 Kg / 26.5 lbs
Max Wind (survival)	220 km/h
Mount	Pole Ø 50-114 mm
Wind Loads (wind= 160 Km/h)	157 N (front thrust) 235 N (lateral thrust)

Materials

External Parts	Stainless Steel
Internal	Silver Plated Brass/Alu
Nuts & bolts	Inox Steel AISI 304
Clamps	Hot Dip Galvanized Steel



3 ELEMENTS YAGI DEMOUNTABLE ANTENNA



EUROTEL BROADCAST S.L.